



**India Meteorological Department  
(Ministry of Earth Sciences)**

**NATIONAL BULLETIN NO. 27 (ARB/03/2023)**

**TIME OF ISSUE:0230 HOURS IST**

**DATED: 24.10.2023**

**FROM: INDIA METEOROLOGICAL DEPARTMENT (FAX NO. 24643965/24699216/24623220)**

**TO: CONTROL ROOM, NDM, MINISTRY OF HOME AFFAIRS (FAX.NO. 23093750)**

**CONTROL ROOM NDMA (FAX.NO. 26701729)**

**CABINET SECRETARIAT (FAX.NO.23012284, 23018638)**

**PS TO HON'BLE MINISTER FOR S & T AND EARTH SCIENCES (FAX NO.23316745)**

**SECRETARY, MOES (FAX NO. 24629777)**

**H.Q. (INTEGRATED DEFENCE STAFF AND CDS) (FAX NO. 23005137/23005147)**

**DIRECTOR GENERAL, DOORDARSHAN (23385843)**

**DIRECTOR GENERAL, AIR (23421105, 23421219)**

**PIB MOES (FAX NO. 23389042)**

**UNI (FAX NO. 23355841)**

**D.G. NATIONAL DISASTER RESPONSE FORCE (NDRF) (FAX NO. 26105912, 2436 3260)**

**DIRECTOR, PUNCTUALITY, INDIAN RAILWAYS (FAX NO. 23388503)**

**ADMINISTRATOR, LAKSHADWEEP ISLANDS (FAX NO. 0413-262184)**

**CHIEF SECRETARY, KERALA (FAX NO. 0471-2327176)**

**CHIEF SECRETARY, KARNATAKA (FAX NO. 080-22258913)**

**CHIEF SECRETARY, GOA (FAX NO. 0832-2415201)**

**CHIEF SECRETARY, MAHARASHTRA (FAX NO. 022- 22028594)**

**CHIEF SECRETARY, GUJARAT (FAX NO. 079-23250305)**

**CHIEF SECRETARY, DAMAN & DIU (FAX NO. 0260-2230775)**

**CHIEF SECRETARY, DADRA & NAGAR HAVELI (FAX NO. 0260-2645466)**

**CHIEF SECRETARY, ODISHA (FAX NO. 0674-2536660)**

**CHIEF SECRETARY, WEST BENGAL (FAX NO. 033-22144328)**

**CHIEF SECRETARY, ANDHRA PRADESH (FAX NO. 0863-2441029, 08645-246600)**

**CHIEF SECRETARY, TAMIL NADU (FAX NO 044-25672304)**

**CHIEF SECRETARY, PUDUCHERRY (FAX NO 0413-2334145)**

**CHIEF SECRETARY, GOVT. OF TRIPURA (FAX NO. 0381-2414013, 2413200)**

**CHIEF SECRETARY, GOVT. OF MIZORAM (FAX NO. 0389-2322745, 2320588)**

**CHIEF SECRETARY, GOVT. OF MANIPUR (FAX NO. 0385-2452629)**

**CHIEF SECRETARY, GOVT. OF NAGALAND (FAX NO. 0370-2270057)**

**ADMINISTRATOR, ANDAMAN & NICOBAR ISLANDS (FAX NO. 03192- 232656)**

**Sub: (A) Very Severe Cyclonic Storm "Tej" (pronounced as Tej) over Westcentral Arabian Sea very close to Yemen coast and (B) Cyclonic Storm "Hamoon" (pronounced as Hamoon) over Northwest & adjoining Westcentral Bay of Bengal**

**(A) Very Severe Cyclonic Storm "Tej" (pronounced as Tej) over Westcentral Arabian Sea very close to Yemen coast**

The Very Severe Cyclonic Storm "Tej" (pronounced as Tej) over Westcentral Arabian Sea moved north-northwestwards with a speed of 9 kmph during past 6 hours and lay centered at 2330 hours IST of 23<sup>rd</sup> October over the westcentral Arabian sea very close to Yemen coast, near latitude 15.8°N and longitude 52.3°E, about 30 km south-southeast of Al Ghaidah (Yemen) and 230 km west-southwest of Salalah (Oman).

It is very likely to move northwestwards and cross Yemen coast close to south of Al-Ghaidah within a few hours as a **Very Severe Cyclonic Storm** with wind speed of 125-135 kmph gusting to 150 kmph. Landfall process continues and will be completed within a few hours.

**Forecast track and intensity are given below:**

Date/Time(IST)	Position (Lat. °N/ long. °E)	Maximum sustained surface wind speed (Kmph)	Category of cyclonic disturbance
23.10.23/2330	15.8/52.3	125-135 gusting to 150	Very Severe Cyclonic Storm
24.10.23/0530	16.1/51.9	90-100 gusting to 110	Severe Cyclonic Storm
24.10.23/1130	16.4/51.5	45-55 gusting to 65	Depression
24.10.23/1730	16.7/51.1	25-35 gusting to 45	Well Marked Low Pressure Area

**Warnings:**

**(i) Wind warning (warning graphics enclosed):**

• **Southwest Arabian Sea:**

**Squally wind** speed reaching **40-50 kmph gusting to 60 kmph** is prevailing and likely to continue till 24<sup>th</sup> morning and decrease gradually thereafter.

• **Westcentral Arabian Sea:**

**Gale wind** speed reaching **125-135 kmph gusting to 150 kmph** is prevailing and likely to decrease rapidly becoming **Gale wind** speed reaching **90-100 kmph gusting to 110 kmph** in the early morning of 24<sup>th</sup> October, squally wind speed reaching **45-55 kmph gusting to 65 kmph** by noon of 24<sup>th</sup> October, and decrease gradually thereafter.

**(ii) Sea Condition**

• **Westcentral Arabian Sea:**

**Phenomenal** sea condition is prevailing and will continue till early hours of 24<sup>th</sup> October. It would improve gradually thereafter becoming **high to very rough** by 24<sup>th</sup> morning and rough to very rough by evening of 24<sup>th</sup> October. Thereafter, it would improve gradually.

**(iii) Fishermen Warning (Graphics attached):**

Fishermen are advised not to venture into

- ❖ **Southwest Arabian Sea** till 24<sup>th</sup> October morning.
- ❖ **Westcentral Arabian Sea** till night of 24<sup>th</sup> October.

**(B) Cyclonic Storm “Hamon” (pronounced as Hamoon) over Northwest & adjoining Westcentral Bay of Bengal**

The Cyclonic Storm “Hamon” (pronounced as Hamoon) over Northwest & adjoining Westcentral Bay of Bengal moved northeastwards with a speed of 18 kmph during past 6 hours, and lay centered at 2330 hours IST of 23<sup>rd</sup> October over the same region, near latitude 19.0°N and longitude 88.0°E, about 200 km southeast of Paradip (Odisha), 290 km south-southeast of Digha (West Bengal) and 400 km south-southwest of Khepupara (Bangladesh).

It is likely to intensify further into a severe cyclonic storm over northwest Bay of Bengal during next 6 hours. It is very likely to move nearly north-northeastwards and cross Bangladesh coast between Khepupara and Chittagong around noon of 25<sup>th</sup> October as a **Deep Depression**.

**Forecast track and intensity are given below:**

Date/Time (IST)	Position (Lat. °N/ long. °E)	Maximum sustained surface wind speed (Kmph)	Category of cyclonic disturbance
23.10.23/2330	19.0/88.0	80-90 gusting to 100	Cyclonic Storm
24.10.23/0530	19.5/88.5	90-100 gusting to 110	Severe Cyclonic Storm
24.10.23/1130	20.0/89.0	80-90 gusting to 100	Cyclonic Storm
24.10.23/1730	20.6/89.5	70-80 gusting to 90	Cyclonic Storm
24.10.23/2330	21.2/90.0	60-70 gusting to 80	Cyclonic Storm
25.10.23/1130	21.9/90.5	50-60 gusting to 70	Deep Depression
25.10.23/2330	22.6/91.0	25-35 gusting to 45	Well Marked Low Pressure Area

## **Warnings:**

### **(i) Rainfall Warning**

**Manipur, Mizoram & Tripura and south Assam & Meghalaya:** Light to moderate rainfall at most places with isolated heavy rainfall over Mizoram and heavy to very rainfall over Tripura is likely on 24<sup>th</sup> October. Isolated heavy rainfall is likely over the same region on 25<sup>th</sup> October. Rainfall intensity will decrease on 26<sup>th</sup> with light to moderate rainfall at a few places over the region.

Light to moderate rainfall is likely at many places over south Assam and eastern Meghalaya on 24<sup>th</sup> and 25<sup>th</sup> October with isolated heavy rainfall over south Assam.

**Coastal Districts of Odisha:** Light to moderate rainfall at most places are likely on 24<sup>th</sup> October.

**Coastal Districts of West Bengal:** Light to moderate rainfall at most places with isolated heavy rainfall over coastal areas of West Bengal likely on 24<sup>th</sup> October.

### **(ii) Wind warning (warning graphics enclosed):**

#### **• North Bay of Bengal:**

**Gale wind** speed reaching **80-90 kmph gusting to 100 kmph** is prevailing and likely to become **90-100 kmph gusting 110 kmph** from 24<sup>th</sup> morning to noon. It would decrease gradually thereafter becoming **Gale wind** speed reaching **70-80 kmph gusting to 90 kmph** by 24<sup>th</sup> evening, and **Squally wind** speed reaching **50-60 kmph gusting to 70 kmph** by 25<sup>th</sup> noon and would decrease thereafter.

- Adjoining Westcentral Bay of Bengal: Squally wind** speed reaching **75-85 kmph gusting to 95 kmph** is prevailing and likely to continue till 24<sup>th</sup> October noon. It is likely to decrease gradually thereafter becoming **squally wind** speed reaching **50-60 kmph gusting 70 kmph** by 24<sup>th</sup> evening and **40-50 kmph gusting 60 kmph** till 25<sup>th</sup> morning.

- Adjoining eastcentral Bay of Bengal: Squally wind** speed reaching **45-55 kmph gusting to 65 kmph** is likely to increase gradually becoming **50-60 kmph gusting to 70 kmph** on 24<sup>th</sup> and decrease from 25<sup>th</sup> onwards.

#### **• Along & off Odisha, West Bengal, Bangladesh and north Myanmar coasts:**

**Squally wind** speed reaching **40-50 kmph gusting to 60 kmph** is likely on 24<sup>th</sup> along & off Odisha coast. **Squally wind** speed reaching **40-50 kmph gusting to 60 kmph** is likely to commence along & off West Bengal, Bangladesh and North Myanmar coasts from 24<sup>th</sup> morning. It would gradually increase becoming **55-65 kmph gusting to 75 kmph** along & off Bangladesh coast, **50-60 kmph gusting to 70 kmph** along & off north Myanmar coast and **45-55 kmph gusting to 65** along & off west Bengal coast on 25<sup>th</sup> October.

#### **• Mizoram, Tripura, south Assam and Manipur:**

**Squally wind** speed reaching **40-50 kmph gusting to 60 kmph** is likely to prevail over Mizoram and Tripura and Strong wind speed reaching **30-40 kmph gusting to 50 kmph** over south Assam & Manipur on 25<sup>th</sup> October.

### **(iii) Sea Condition**

#### **• North Bay of Bengal:**

**Very Rough to High sea condition** is prevailing and likely to continue till 24<sup>th</sup> and very rough on 25<sup>th</sup> October.

- Adjoining westcentral Bay of Bengal: Very Rough to high** sea condition is prevailing and likely to continue till 24<sup>th</sup> October and **rough to very rough** on 25<sup>th</sup> October. It is likely to improve gradually thereafter.

- Adjoining eastcentral Bay of Bengal: Moderate to rough sea condition** is prevailing and likely to continue till 24<sup>th</sup> October and **rough to very rough** on 25<sup>th</sup> October. It is likely to improve gradually thereafter.

- Along & off Odisha, West Bengal, Bangladesh and north Myanmar coasts: Rough sea condition** is likely on 23<sup>rd</sup> and **rough to very rough** on 24<sup>th</sup> and 25<sup>th</sup> October.

**(iv) Fishermen Warning (Graphics attached):**

Fishermen are advised not to venture into

- ❖ **Adjoining eastcentral Bay of Bengal** from 24<sup>th</sup> to 25<sup>th</sup> October.
- ❖ **Westcentral Bay of Bengal** till 24<sup>th</sup> October.
- ❖ **North Bay of Bengal and along & off Odisha, West Bengal, Bangladesh and north Myanmar coasts** during 24<sup>th</sup> to 25<sup>th</sup> October.

**Both the systems are under continuous surveillance and the next bulletin will be issued at 0530 hours IST of 24<sup>th</sup> October, 2023.**

**(Akhil Srivastava)**

**Scientist D, Cyclone Warning Division, New Delhi**

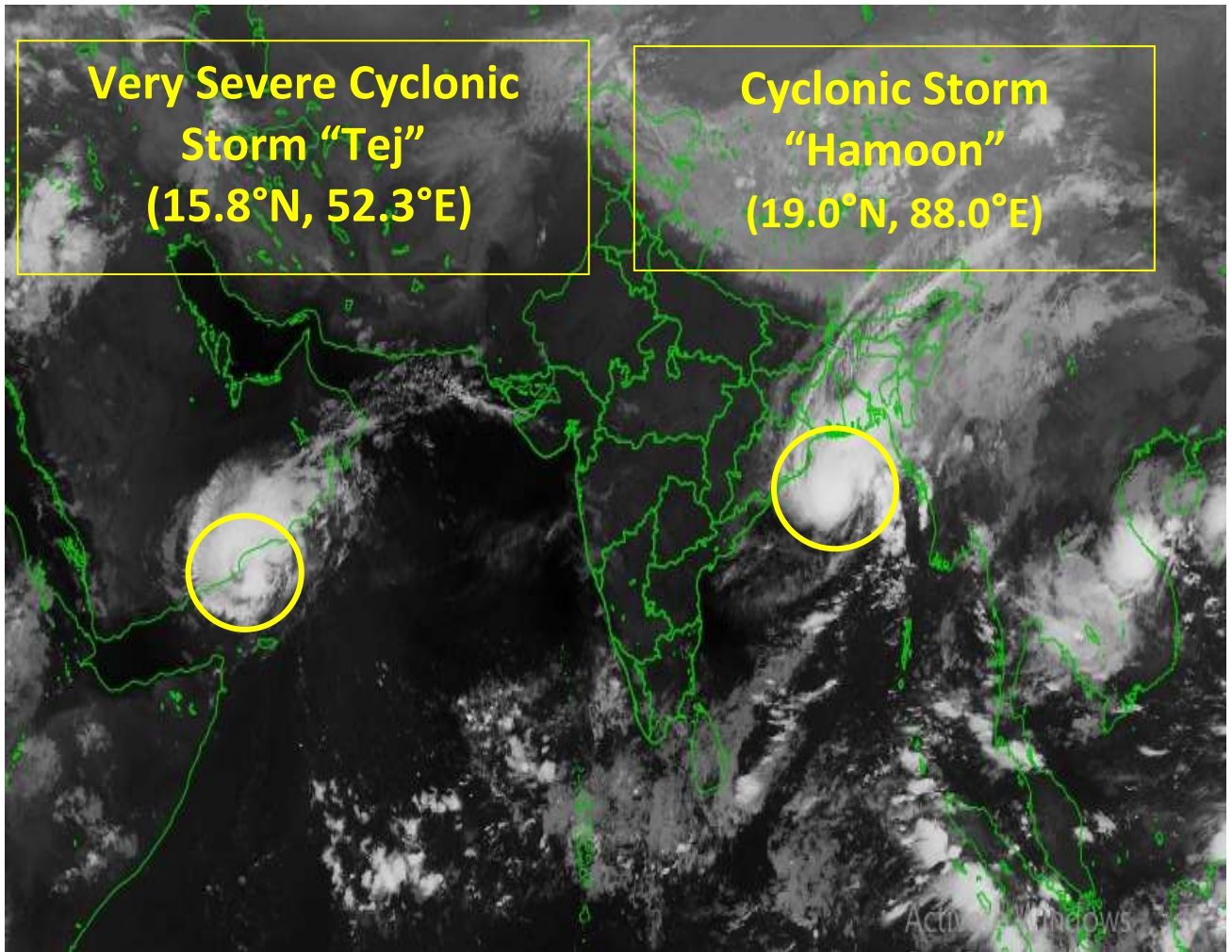
*Copy to: ACWC Mumbai/ ACWC Chennai/ ACWC Kolkata/CWC Ahmedabad/CWC Bhubaneswar/CWC Vishakhapatnam/CWC Thiruvananthapuram/MC Goa*

**Spatial rainfall distribution: Isolated: <25%, A few: 26-50%, Many: 51-75%, Most: 76-100%**

**Rainfall amount (mm): Heavy rain: 64.5 – 115.5, Very heavy rain: 115.6 – 204.4, Extremely heavy rain: 204.5 or more.**

**Very Severe Cyclonic  
Storm "Tej"  
(15.8°N, 52.3°E)**

**Cyclonic Storm  
"Hamoon"  
(19.0°N, 88.0°E)**





**OBSERVED AND FORECAST TRACK ALONGWITH CONE OF UNCERTAINTY OF VERY SEVERE CYCLONIC STORM "TEJ" OVER WESTCENTRAL ARABIAN SEA BASED ON 1800 UTC (2330 IST) OF 23<sup>RD</sup> OCTOBER 2023.**



DATE/TIME IN UTC

IST=UTC + 0530

L: LOW PRESSURE AREA

WML: WELL MARKED LOW PRESSURE AREA

D: DEPRESSION (17-27 KT)

DD: DEEP DEPRESSION (28-33 KT)

CS: CYCLONIC STORM (34-47 KT)

SCS: SEVERE CYCLONIC STORM (48-63KT)

VSCS: VERY SEVERE CYCLONIC STORM (64-89 KT)

ESCS: EXTREMELY SEVERE CYCLONIC STORM (90-119 KT)

SuCS: SUPER CYCLONIC STORM ( $\geq$  120 KT)



LESS THAN 34 KT



34-47 KT



$\geq$  48 KT



OBSERVED TRACK



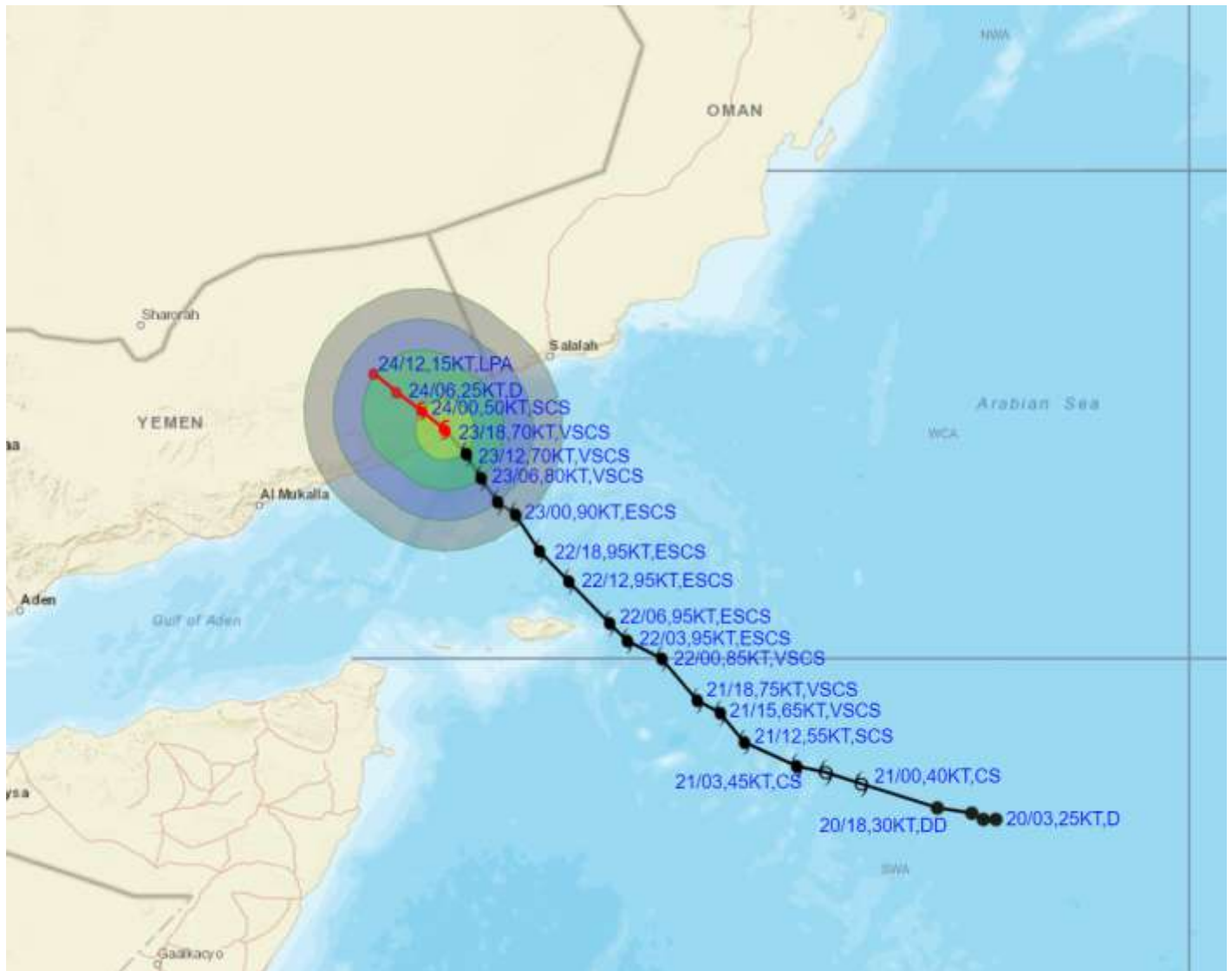
FORECAST TRACK



CONE OF UNCERTAINTY



**OBSERVED AND FORECAST TRACK ALONGWITH QUADRANT WIND DISTRIBUTION OF VERY SEVERE CYCLONIC STORM "TEJ" OVER WESTCENTRAL ARABIAN SEA BASED ON 1800 UTC (2330 IST) OF 23<sup>RD</sup> OCTOBER 2023.**



DATE/TIME IN UTC  
 IST=UTC + 0530  
 L: LOW PRESSURE AREA  
 WML: WELL MARKED LOW PRESSURE AREA  
 D: DEPRESSION (17-27 KT)  
 DD: DEEP DEPRESSION (28-33 KT)  
 CS: CYCLONIC STORM (34-47 KT)  
 SCS: SEVERE CYCLONIC STORM (48-63KT)  
 VSCS: VERY SEVERE CYCLONIC STORM (64-89 KT)  
 ESCS: EXTREMELY SEVERE CYCLONIC STORM (90-119 KT)  
 SuCS: SUPER CYCLONIC STORM (≥ 120 KT)

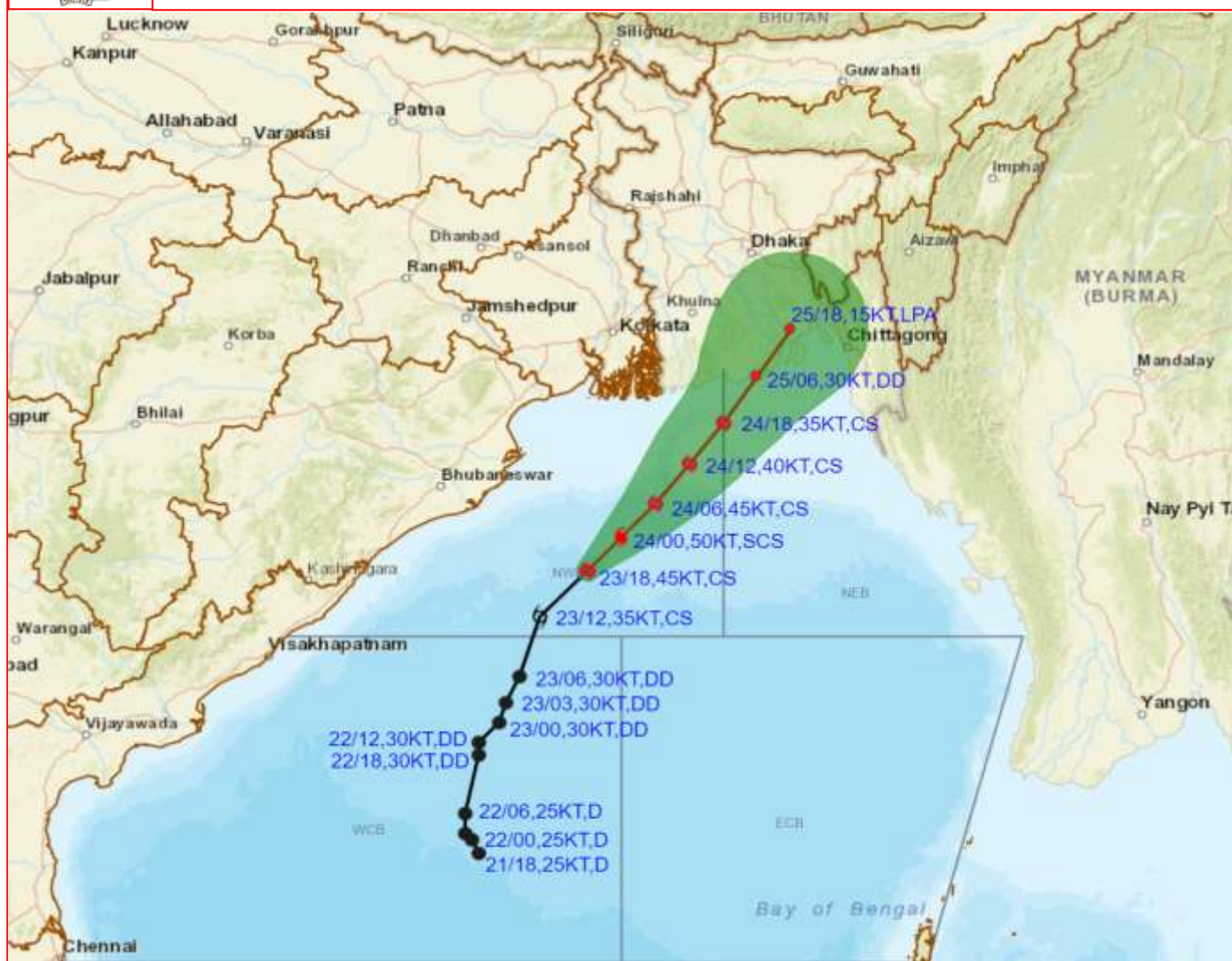
- LESS THAN 34 KT
- ⊖ 34-47 KT
- ⊕ ≥ 48 KT
- OBSERVED TRACK
- FORECAST TRACK
- ▲ CONE OF UNCERTAINTY
- AREA OF MAXIMUM SUSTAINED WIND SPEED:
- 28-33 KT (52-61 KMPH)
- 34-49 KT (62-91 KMPH)
- 50-63 KT (92-117 KMPH)
- ≥ 64 KT (≥118 KMPH)

**IMPACT OVER THE SEA**

MSW (knot/kmph)	Impact	Action
28-33 (52-61)	Very rough seas	Total suspension of fishing operations
34-49 (62-91)	High to very high seas	Total suspension of fishing operations
50-63 (92-117)	Very high seas	Total suspension of fishing operations
≥ 64 (≥118)	Phenomenal	Total suspension of fishing operations



**OBSERVED AND FORECAST TRACK ALONGWITH CONE OF UNCERTAINTY OF CYCLONIC STORM "HAMOON" OVER NORTHWEST AND ADJOINING WESTCENTRAL BAY OF BENGAL BASED ON 1800 UTC (2330 IST) OF 23RD OCTOBER 2023.**



DATE/TIME IN UTC  
IST=UTC + 0530

L: LOW PRESSURE AREA  
WML: WELL MARKED LOW PRESSURE AREA  
D: DEPRESSION (17-27 KT)  
DD: DEEP DEPRESSION (28-33 KT)  
CS: CYCLONIC STORM (34-47 KT)  
SCS: SEVERE CYCLONIC STORM (48-63KT)  
VSCS: VERY SEVERE CYCLONIC STORM (64-89 KT)  
ESCS: EXTREMELY SEVERE CYCLONIC STORM (90-119 KT)  
SuCS: SUPER CYCLONIC STORM ( $\geq$  120 KT)

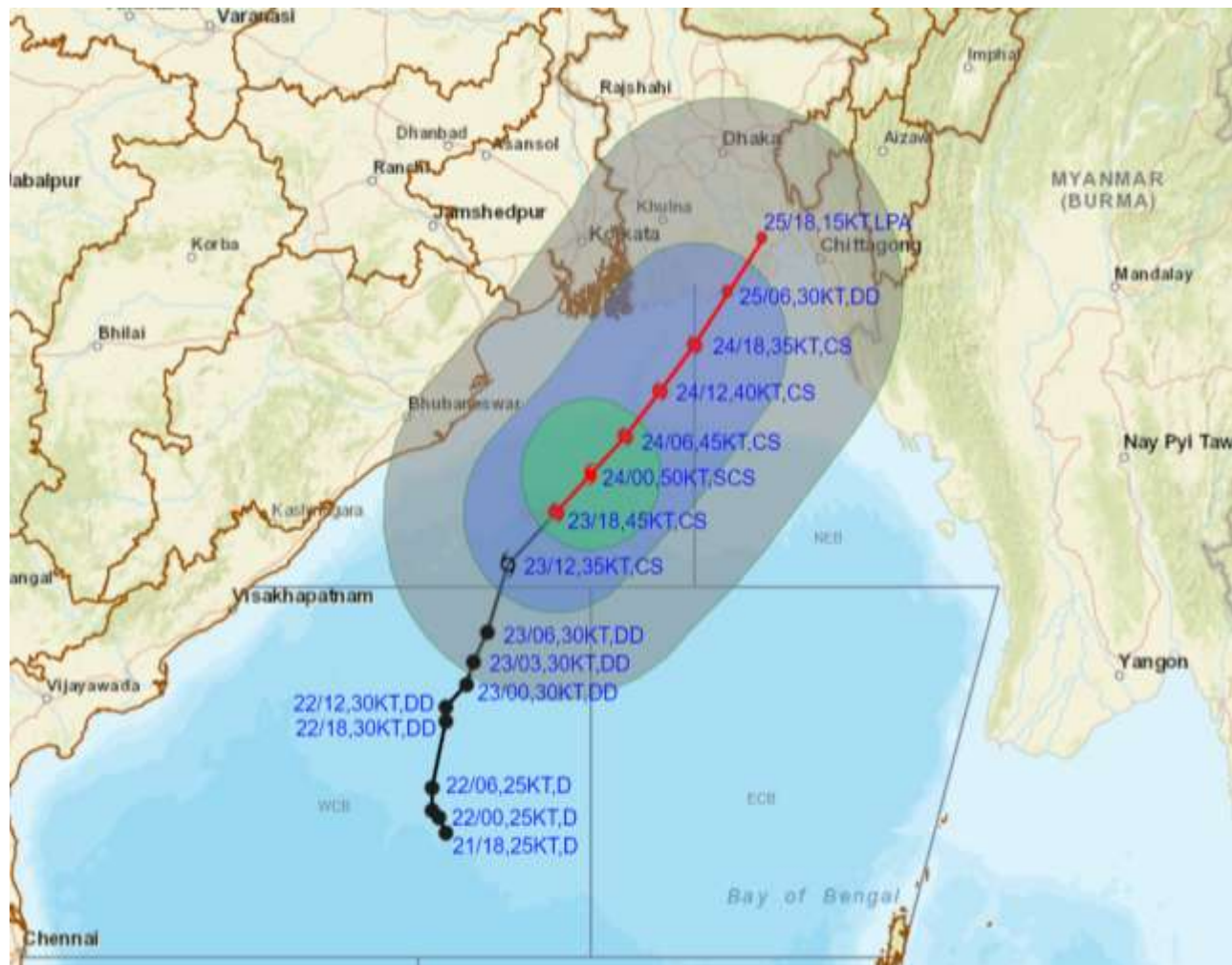
- LESS THAN 34 KT
- 34.47 KT
- $\geq$  48 KT
- OBSERVED TRACK
- FORECAST TRACK
- CONE OF UNCERTAINTY

Forecast	DISTANCE(KM) AND DIRECTION FROM STATIONS		
	PARADIP (CWR)	DIGHA	KHEPUPARA
24.10.23/1800	360, ENE	270, E	90, SSW
25.10.23/0600	440, ENE	320, E	30, ESE
25.10.23/1800	520, ENE	380, ENE	100, NE





**OBSERVED AND FORECAST TRACK ALONGWITH QUADRANT WIND DISTRIBUTION OF CYCLONIC STORM "HAMOON" OVER NORTHWEST AND ADJOINING WESTCENTRAL BAY OF BENGAL BASED ON 1800 UTC (2330 IST) OF 23RD OCTOBER 2023.**



DATE/TIME IN UTC  
 IST=UTC + 0530  
 L: LOW PRESSURE AREA  
 WML: WELL MARKED LOW PRESSURE AREA  
 D: DEPRESSION (17-27 KT)  
 DD: DEEP DEPRESSION (28-33 KT)  
 CS: CYCLONIC STORM (34-47 KT)  
 SCS: SEVERE CYCLONIC STORM (48-63KT)  
 VSCS: VERY SEVERE CYCLONIC STORM (64-89 KT)  
 ESCS: EXTREMELY SEVERE CYCLONIC STORM (90-119 KT)  
 SuCS: SUPER CYCLONIC STORM (≥20 KT)

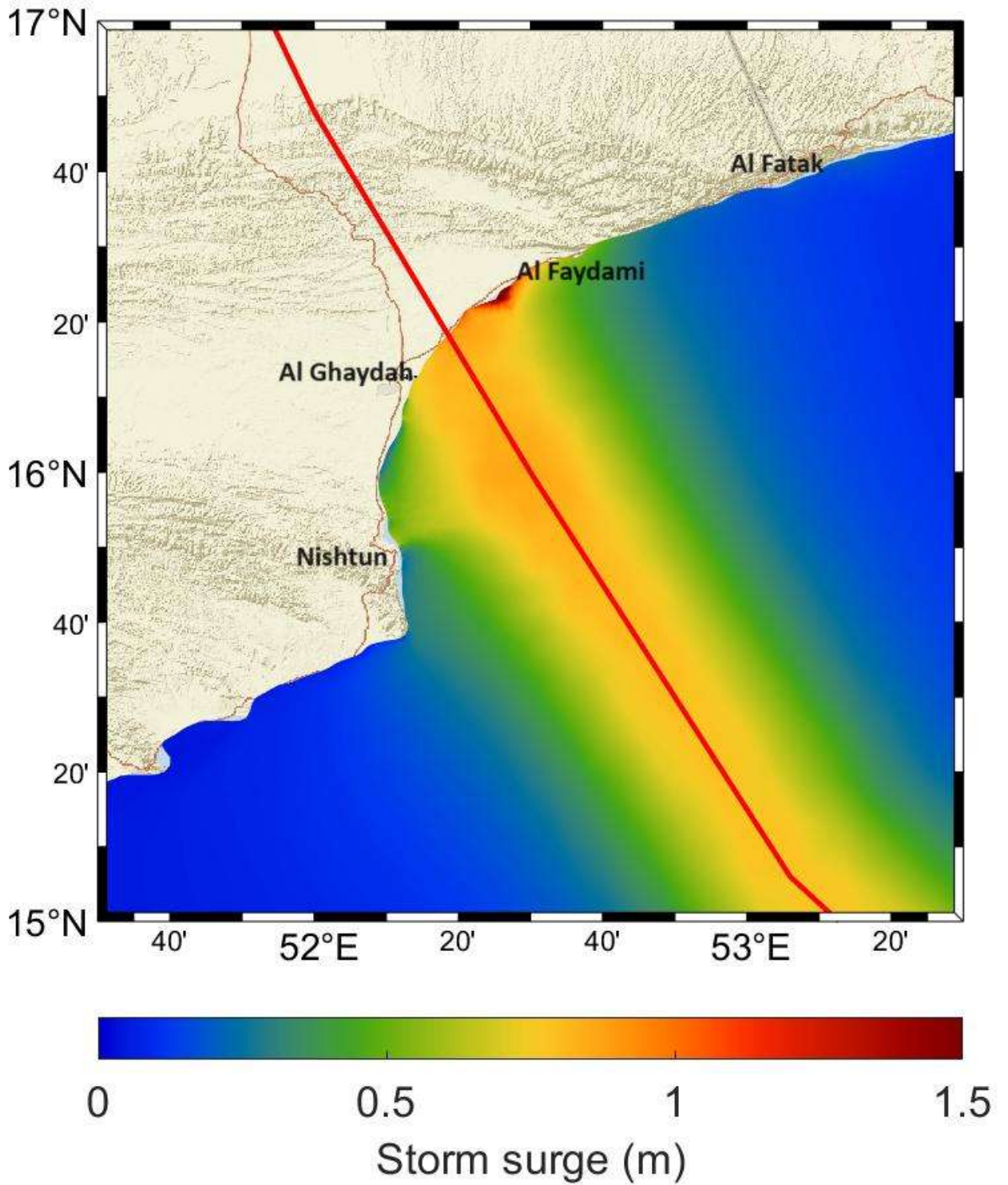
● LESS THAN 34 KT  
 Ⓒ 34-47 KT  
 Ⓓ ≥ 48 KT  
 — OBSERVED TRACK  
 — FORECAST TRACK  
 ○ CONE OF UNCERTAINTY  
 AREA OF MAXIMUM SUSTAINED WIND SPEED:  
 28-33 KT (52-61 KMPH)  
 34-49 KT (62-91 KMPH)  
 50-63 KT (92-117 KMPH)  
 ≥ 64 KT (≥118 KMPH)

**IMPACT OVER THE SEA**

MSW (knot/kmph)	Impact	Action
28-33 (52-61)	Very rough seas	Total suspension of fishing operations
34-49 (62-91)	High to very high seas	Total suspension of fishing operations
50-63 (92-117)	Very high seas	Total suspension of fishing operations
≥ 64 (≥118)	Phenomenal	Total suspension of fishing operations

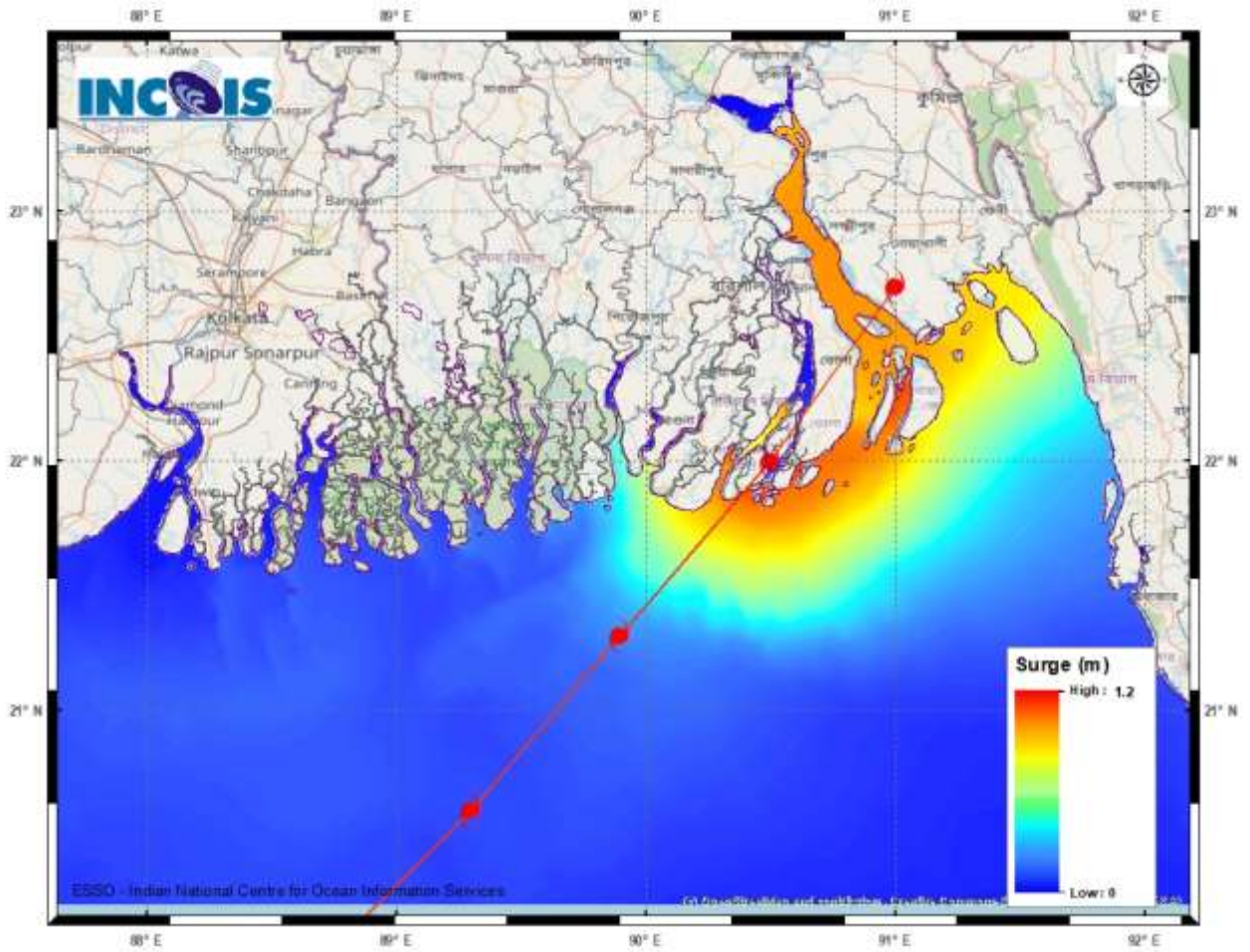
**STORM SURGE GUIDANCE FOR YEMEN:**

Storm surge of about 2 meter height above the astronomical tide is Likely to inundate low lying areas between al Ghaydah and al Faydami near the landfall point at the time of landfall.



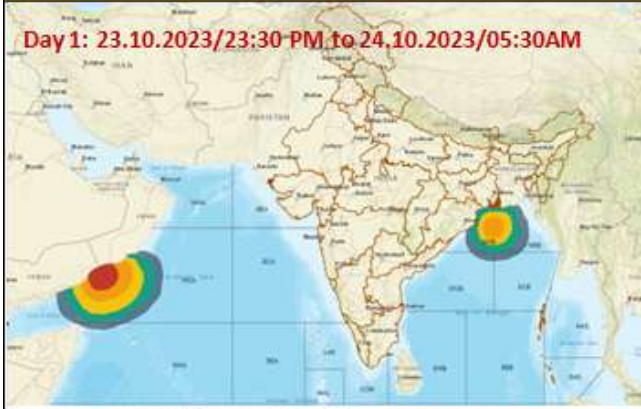
## STORM SURGE GUIDANCE FOR BANGLADESH:

Storm surge of about 1.0-1.5 metre height above the astronomical tide is likely to inundate low lying areas between Khepupara and Chittagong (Bangladesh) around the time of landfall.



## Fishermen warning graphics

**Day 1: 23.10.2023/23:30 PM to 24.10.2023/05:30AM**



**Day 2: 24.10.2023/05:30AM to 25.10.2023/05:30AM**



**Day 3: 25.10.2023/05:30AM to 26.10.2023/05:30AM**



**Day 4: 26.10.2023/05:30AM to 27.10.2023/05:30AM**



**Day 5: 27.10.2023/05:30AM to 28.10.2023/05:30AM**



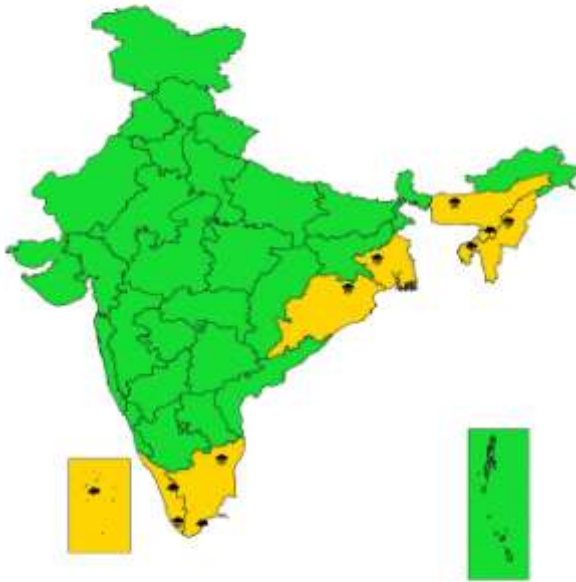
	Squally WX with wind speed 40-45 kmph gusting to 55 kmph
	Squally WX with wind speed 45-55 kmph gusting to 65 kmph
	Squally wind with speed 50-60 kmph gusting to 70 kmph
	CS with Gale wind speed 60-90 kmph gusting to 110 kmph
	SCS with Gale wind speed 90-110 kmph gusting to 120 kmph
	VSCS with Gale wind speed 110-160 kmph gusting to 175 kmph
	ESCS with Gale wind speed 160-220 kmph gusting to 240 kmph

**Fishermen are advised not to venture into the marked areas.**

# WEATHER WARNING GRAPHICS



SUBDIVISIONWISE WEATHER WARNING FOR DAY 1  
( 23-10-2023 )



- |  |  |   |
|--|--|---|
| <b>Subdivision Warning</b><br>● Heavy Rain<br>❄️ Heavy Snow<br>⚡ Thunderstorms & Lightning<br>🌨️ Hailstorm | ☁️ Dust Storm<br>🌪️ Strong Surface Winds<br>📉 Heat Wave<br>📈 Cold wave<br>🌫️ Fog | <b>Subdivision color</b><br>🟢 NO WARNING<br>🟡 WATCH(BE UPDATED)<br>🟠 ALERT (BE PREPARED)<br>🔴 WARNING (TAKE ACTION) |
|--|--|---|



SUBDIVISIONWISE WEATHER WARNING FOR DAY 2  
( 24-10-2023 )



- |  |  |   |
|--|--|---|
| <b>Subdivision Warning</b><br>● Heavy Rain<br>❄️ Heavy Snow<br>⚡ Thunderstorms & Lightning<br>🌨️ Hailstorm | ☁️ Dust Storm<br>🌪️ Strong Surface Winds<br>📉 Heat Wave<br>📈 Cold wave<br>🌫️ Fog | <b>Subdivision color</b><br>🟢 NO WARNING<br>🟡 WATCH(BE UPDATED)<br>🟠 ALERT (BE PREPARED)<br>🔴 WARNING (TAKE ACTION) |
|--|--|---|



SUBDIVISIONWISE WEATHER WARNING FOR DAY 3  
( 25-10-2023 )



- |  |  |   |
|--|--|---|
| <b>Subdivision Warning</b><br>● Heavy Rain<br>❄️ Heavy Snow<br>⚡ Thunderstorms & Lightning<br>🌨️ Hailstorm | ☁️ Dust Storm<br>🌪️ Strong Surface Winds<br>📉 Heat Wave<br>📈 Cold wave<br>🌫️ Fog | <b>Subdivision color</b><br>🟢 NO WARNING<br>🟡 WATCH(BE UPDATED)<br>🟠 ALERT (BE PREPARED)<br>🔴 WARNING (TAKE ACTION) |
|--|--|---|

- WATCH(BE UPDATED)
- ALERT (BE PREPARED)
- WARNING (TAKE ACTION)



**SUBDIVISIONWISE WEATHER WARNING FOR DAY 4  
( 26-10-2023)**



**Subdivision Warning**

- ☁ Heavy Rain
- ❄ Heavy Snow
- ⚡ Thunderstorms & Lightning
- ☁ Haze/fog
- ☁ Dust Storm
- 🌪 Strong Surface Winds
- 🔥 Heat Wave
- ❄ Cold wave
- 🌫 Fog

**Subdivision color**

- 🟢 NO WARNING
- 🟡 WATCH(BE UPDATED)
- 🟠 ALERT (BE PREPARED)
- 🔴 WARNING (TAKE ACTION)



**SUBDIVISIONWISE WEATHER WARNING FOR DAY 5  
( 27-10-2023)**



**Subdivision Warning**

- ☁ Heavy Rain
- ❄ Heavy Snow
- ⚡ Thunderstorms & Lightning
- ☁ Haze/fog
- ☁ Dust Storm
- 🌪 Strong Surface Winds
- 🔥 Heat Wave
- ❄ Cold wave
- 🌫 Fog

**Subdivision color**

- 🟢 NO WARNING
- 🟡 WATCH(BE UPDATED)
- 🟠 ALERT (BE PREPARED)
- 🔴 WARNING (TAKE ACTION)

- 🟡 WATCH(BE UPDATED)
- 🟠 ALERT (BE PREPARED)
- 🔴 WARNING (TAKE ACTION)